

Expansion Inserts

Headed and parallel brass inserts, designed for use with plastics.

Expansion Inserts

Expansion inserts are an easy to assemble alternative to other types of insert. They offer a durable thread in applications where the high pull-out resistance of a self-tapping, heat or ultrasonic insert is not essential.

They are ideally suited for use in plastics which are strong enough to resist the expansion of the insert, yet flexible enough to allow the knurls to anchor into the material. Expansion inserts are hand-placed into a hole of specified size and the action of the screw on final assembly locks the insert into place.

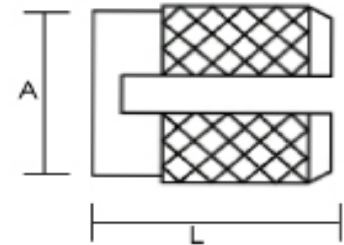
Our range is available in parallel (Series 81) and headed (Series 82) versions and are stocked in brass.

Size Range - Parallel & Headed Types

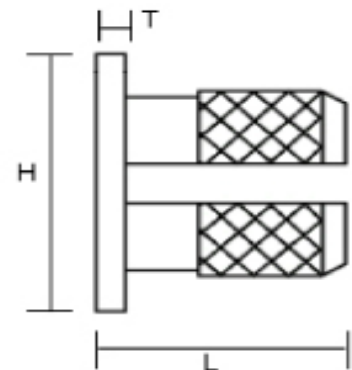
Nominal Thread Size	M3	M3.5	M4	M5	M6	M8
Diameter 'A'	3.96	4.72	5.50	6.32	7.90	9.50
Head Diameter 'H'	5.53	6.35	7.13	7.92	9.52	11.10
Head Thickness 'T'	0.50	0.65	0.81	1.00	1.24	1.24
Length 'L'	4.72	6.32	7.92	9.42	12.70	12.60
Recommended Hole Size:						
Min	4.00	4.80	5.60	6.40	8.00	9.60
Max	4.10	4.90	5.70	6.50	8.10	9.70



Series 81 Parallel



Series 82 Headed



[View Expansion Inserts Range](#)

[Request A Quote](#)

[Visit Our Website](#)

[Join Our Community](#)

TECHNIFAST

North Folds Road
Oakley Hay Industrial Estate
Corby, Northants, NN18 9AT

+44 (0) 1536 461140
sales@technifast.co.uk
www.technifast.co.uk

