

# THREADED SPACERS AND STUDDING CONNECTORS

## THREADED SPACERS – FEMALE/FEMALE, HEXAGONAL & ROUND



Hexagonal spacers are available in nickel plated brass, stainless steel grade AISI 303 and steel with a bright zinc and clear passivate finish. Round spacers are available in mild steel, bright zinc plated and stainless steel grade A2.

Some sizes are not available as stock items in all materials (see table). There are many intermediate lengths available from stock which are not shown in the table. Lengths up to 20mm are usually tapped the full length, but over 20mm they are tapped each end to the depths specified in the table under the 'Y' dimension.



### PRODUCT IDENTIFICATION

- FA** Hexagonal threaded spacer, mild steel spacer, grade S300Pb, bright zinc & clear passivate finish
- FL** Hexagonal threaded spacer, brass spacer, nickel plated
- FI** Hexagonal threaded spacer, stainless steel spacer (stocked in M3 and M4 only)
- FAR** Round threaded spacer, mild steel, bright zinc plated
- FIR** Round threaded spacer, stainless A2

### TO SPECIFY

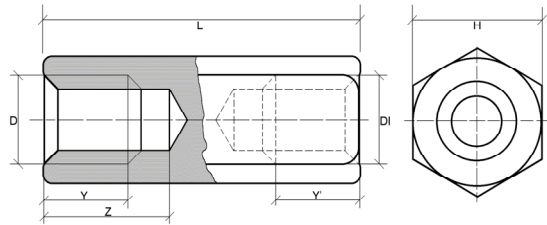
State the relevant material code, thread size and length  
Eg FL 3 x 20 or FIR M5 x 15

### SPECIAL SPACERS

- ◆ Non standard sizes can be supplied to drawing
- ◆ Special lengths are available to order

### SIZE RANGE – HEXAGONAL THREADED SPACERS

| Nominal Thread Size   | M2                              | M2.5         | M3                      | M4   | M5           | M6    |
|---|---------------------------------|--------------|-------------------------|------|--------------|-------|
| Available Materials   | Brass                           | Brass, Steel | Brass, Steel, Stainless |      | Brass, Steel | Steel |
| Dimension 'H'   | 4.0                             | 5.0          | 5.0*                    | 7.0  | 8.0          | 10.0  |
| Thread Size 'D' & 'DI'  | M2                              | M2.5         | M3                      | M4   | M5           | M6    |
| Dimension 'Y' & 'Y1'  | Through Hole                    |              |                         |      |              |       |
| Where 'L' is 20 or less   |                                 |              |                         |      |              |       |
| Where 'L' is over 20  | 10.0                            | 10.0         | 10.0                    | 10.0 | 10.0         | 10.0  |
| Dimension 'Z'   | 'Y' Dimension + minimum of 1 mm |              |                         |      |              |       |
| Lengths   |                                 |              |                         |      |              |       |
| 5   |                                 |              |                         |      |              |       |
| 8   |                                 |              |                         |      |              |       |
| 10  |                                 |              |                         |      |              |       |
| 12  |                                 |              |                         |      |              |       |
| 15  |                                 |              |                         |      |              |       |
| 18  |                                 |              |                         |      |              |       |
| 20  |                                 |              |                         |      |              |       |
| 25  |                                 |              |                         |      |              |       |
| 30  |                                 |              |                         |      |              |       |
| 35  |                                 |              |                         |      |              |       |
| 40  |                                 |              |                         |      |              |       |
| 45  |                                 |              |                         |      |              |       |
| 50  |                                 |              |                         |      |              |       |
| 55  |                                 |              |                         |      |              |       |
| 60  |                                 |              |                         |      |              |       |
| 70  |                                 |              |                         |      |              |       |
| 80  |                                 |              |                         |      |              |       |
|   | Length Tolerances to js 13      |              |                         |      |              |       |
| * In stainless steel the 'H' Dimension is 5.5 mm. Steel and Brass M3 are also available with 5.5 mm 'H' dimension |                                 |              |                         |      |              |       |



### SIZE RANGE – ROUND THREADED SPACER (FULL LENGTH THREAD)

| Thread Size       | M4                           | M5                          | M6 | M8 | M10 | M12 |
|-------------------|------------------------------|-----------------------------|----|----|-----|-----|
| Material          | Steel, BZP                   | Steel, BZP and Stainless A2 |    |    |     |     |
| Dimension 'D', mm | 7                            | 8                           | 10 | 11 | 13  | 15  |
| Lengths           | Made to Customer Requirement |                             |    |    |     |     |

